



Envisioning the Future

Lamberton Street Redevelopment Area

City of Trenton

Heyer, Gruel and Associates

September 13, 2005



Key Strategies

- Rehabilitation of existing housing through targeted neighborhood rehabilitation program.
- Dedicated funding sources:
 - Funds from sale of City owned property for middle income owner occupied households.
 - RCA funds for low and moderate income households.
- Sale of City owned land for Single-Family housing.
- Development of small projects on vacant parcels – 4 Residential and 3 Mixed-Use projects proposed.
- Development of Kerney Homes site for market rate multi-family housing.
- Adaptive reuse of Old Cracker Factory building.
- New pedestrian and vehicular connections.
- Development of a bike - pedestrian trail connection.
- No condemnation.
- No relocation.

Redevelopment Districts

Lamberton Street Redevelopment Area

Redevelopment Districts



City of Trenton, NJ
September 2005

HEYER, GRUEL
& ASSOCIATES
COMMUNITY PLANNING CONSULTANTS

Single-Family Residential

Lamberton Street Redevelopment Area

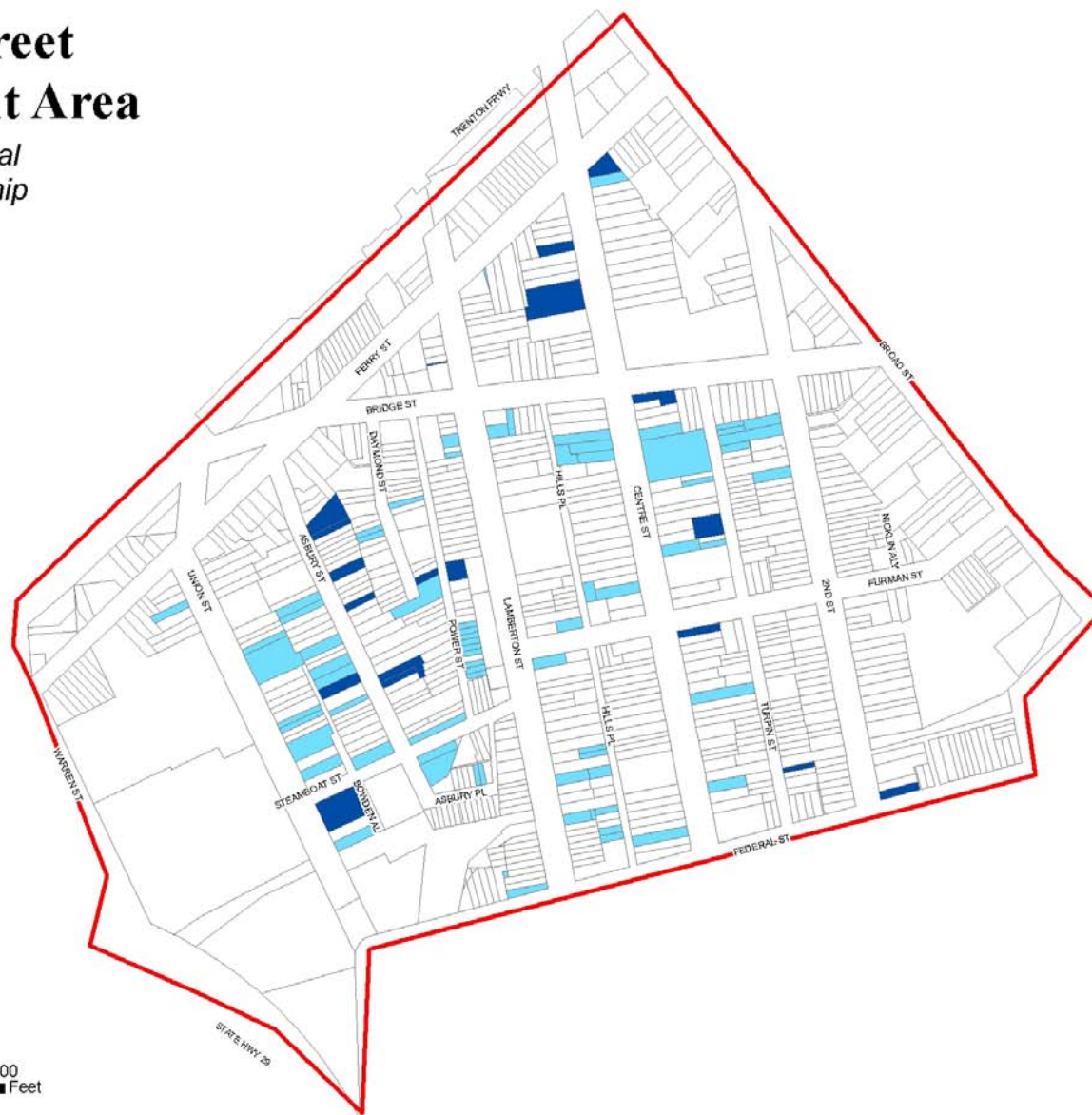
*Single-Family Residential
City of Trenton Ownership*

Legend

Public Property

Vacant

Boarded



1:3,000

0 125 250 500 Feet

1 inch equals 250 feet

City of Trenton, NJ

September 2005

HEYER, GRUEL
& ASSOCIATES
COMMUNITY PLANNING CONSULTANTS

Neighborhood Residential

Lamberton Street Redevelopment Area

Neighborhood Residential

Legend

Neighborhood Residential



City of Trenton, NJ
September 2005

HEYER, GRUEL
& ASSOCIATES
COMMUNITY PLANNING CONSULTANTS

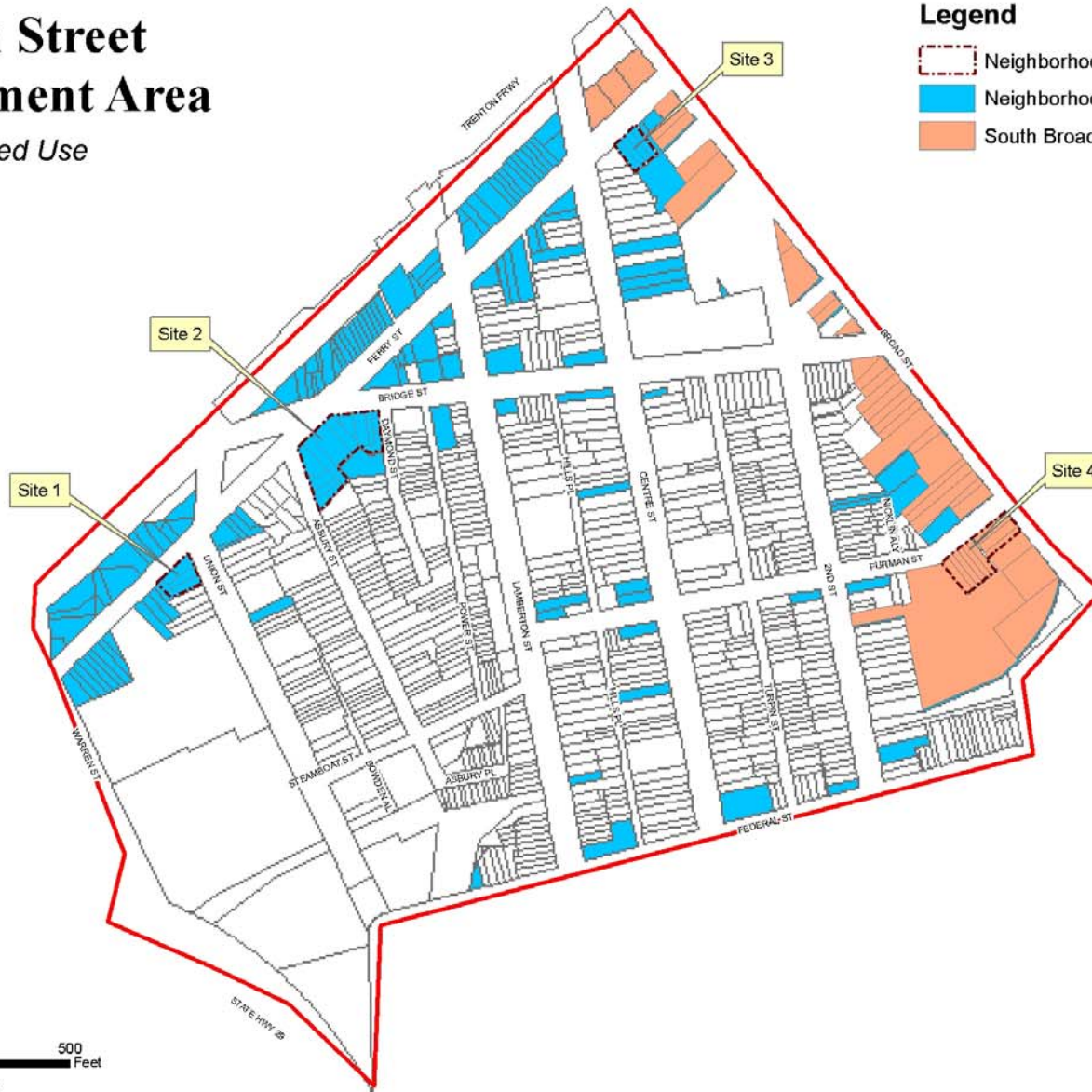
Neighborhood Mixed Use

Lamberton Street Redevelopment Area

Neighborhood Mixed Use

Legend

- Neighborhood Mixed Use Project Sites
- Neighborhood Mixed Use and Existing Commercial
- South Broad Street Mixed Use



City of Trenton, NJ

September 2005

HEYER, GRUEL
& ASSOCIATES
COMMUNITY PLANNING CONSULTANTS

Adaptive Reuse

Lamberton Street Redevelopment Area

Adaptive Reuse - Cracker Factory

Legend

Adaptive Reuse



City of Trenton, NJ
September 2005

HEYER, GRUEL
& ASSOCIATES
COMMUNITY PLANNING CONSULTANTS

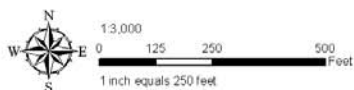
Kerney Homes

Lamberton Street Redevelopment Area

Kerney Homes

Legend

 Kerney Homes



City of Trenton, NJ
September 2005

 HEYER, GRUEL
& ASSOCIATES
COMMUNITY PLANNING CONSULTANTS

Multi-Family Development Kerney Homes



Circulation and Parking

Lamberton Street Redevelopment Area

Circulation and Parking

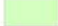


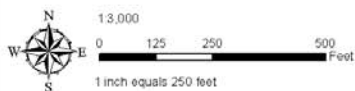
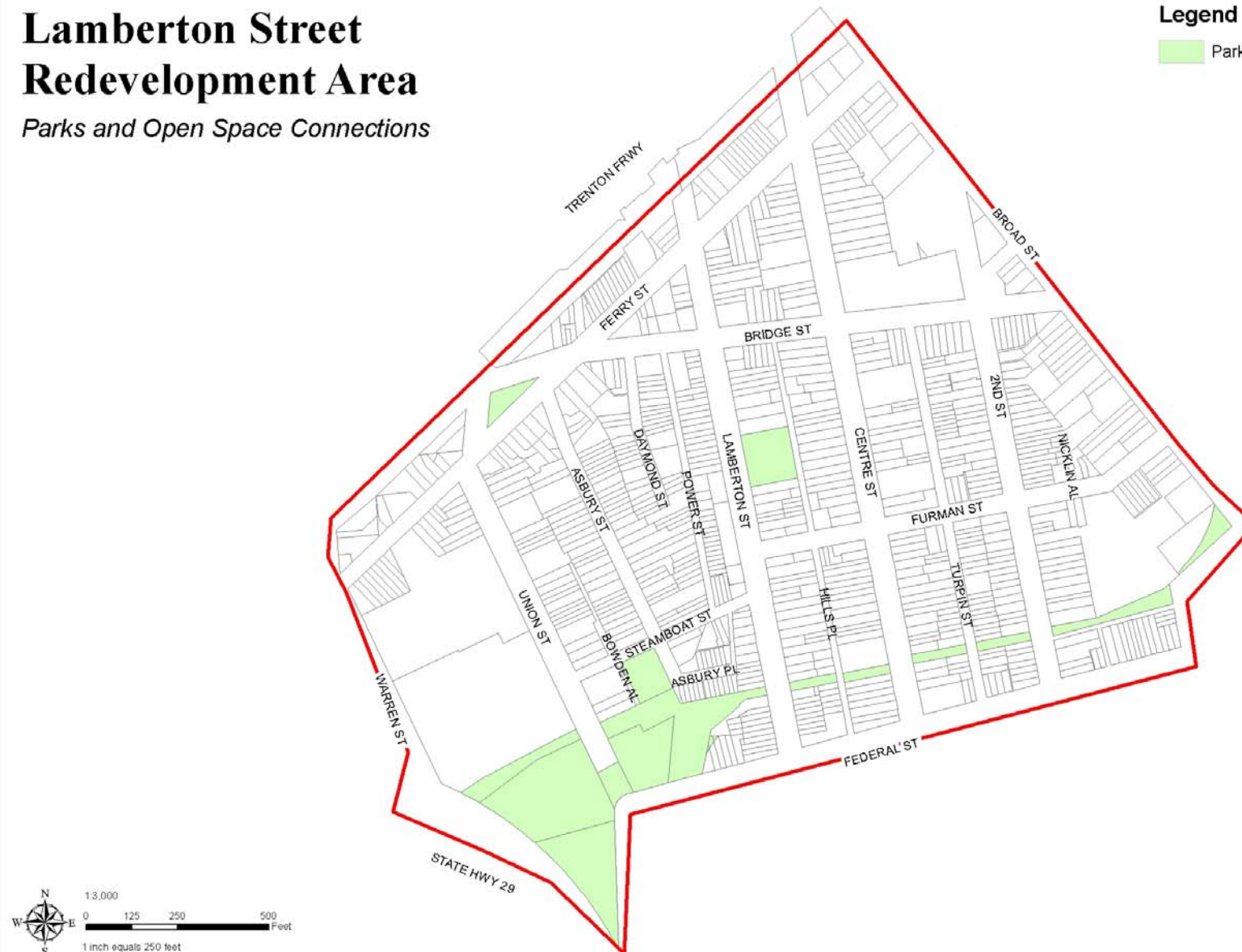
Parks and Open Space

Lamberton Street Redevelopment Area

Parks and Open Space Connections

Legend

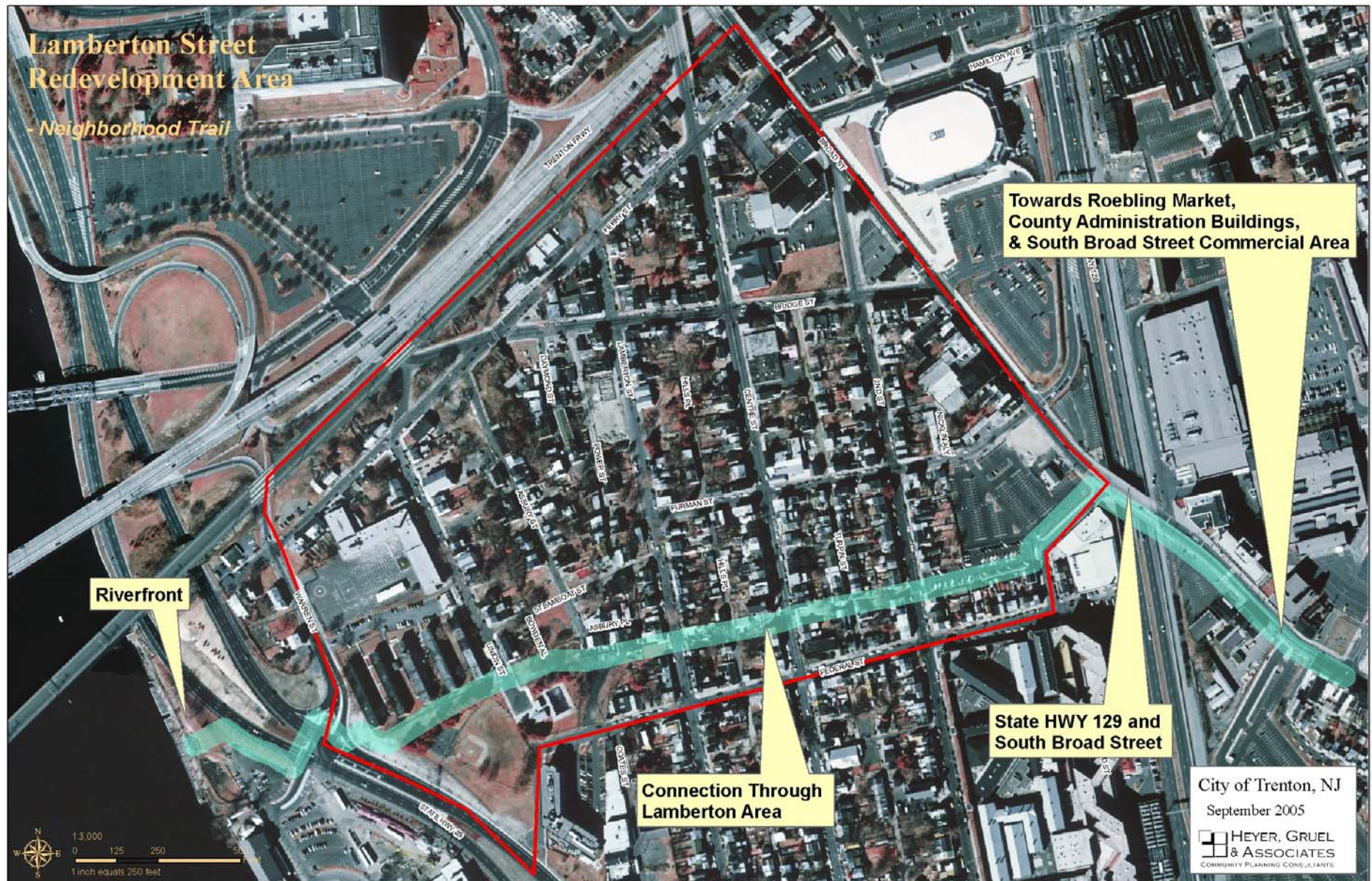
 Parks and Open Space Connections



City of Trenton, NJ
September 2005

 **HEYER, GRUEL
& ASSOCIATES**
COMMUNITY PLANNING CONSULTANTS

Neighborhood trail



View of the Neighborhood Trail



View of Asbury Street

